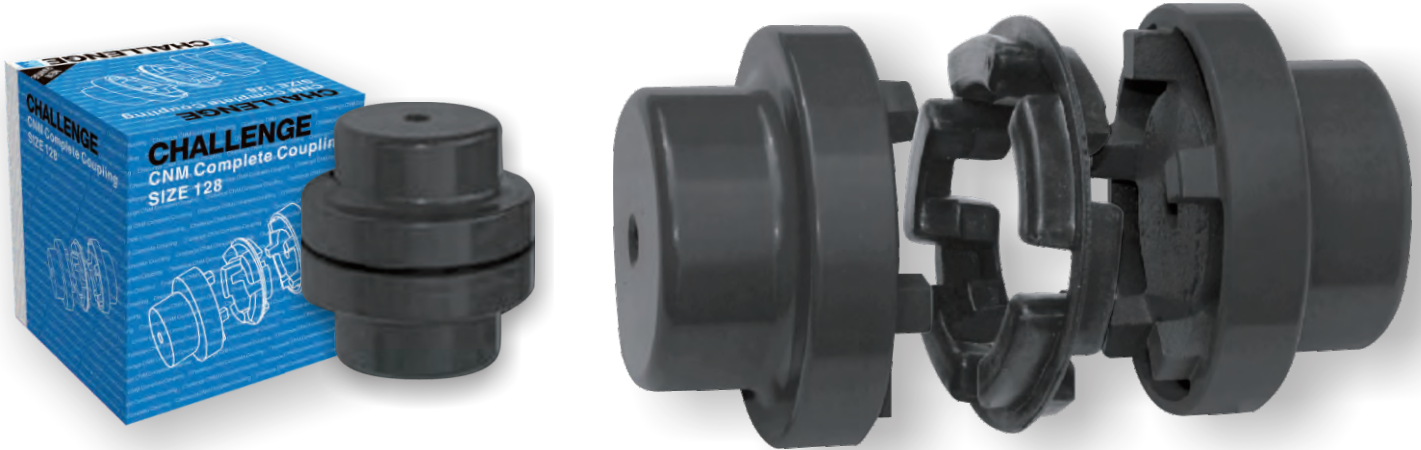
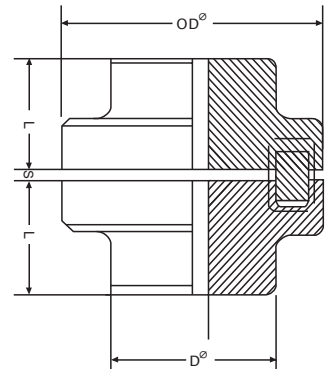


# The NEW range of CNM couplings from Challenge



The Challenge NM coupling compliments our range of over 6 other types of coupling by offering dampening protection, impact mitigation, electrical isolation and mis-alignment accomodation in multiple directions with less clearance requirements than the FFX tyre coupling.

- Accomodates mis-alignment in the radial and axial direction
- Synthetic rubber intermediate ring
- Reduces shock, vibration and noise between the drive and driven system
- Protects against drive resonance and shock loads
- Available for shaft diameters from 7mm up to 95mm
- 13Nm of torque transmission up to 1600Nm
- Maximum 12500rpm through to 3000rpm
- Available in Solid Hub or Finished Bore



Interchangeable with the Nor-Mex\* E Pb72 Shore A couplings

Model	Boss Diameter (D) mm	Outside Diameter (OD) mm	Length (L) mm	Join Spacing (S) mm	Torque		Bore Diameter		Max Speed rpm	Approx. Weight (Complete) kgs
					Normal	Max	Min	Max		
					Nm	Nm	mm	mm		
CNM 50	33	50	25	2.0±0.5	13	23	7	19	12500	0.48
CNM 67	46	67	30	2.5±0.5	22	39	8	28	10000	1.02
CNM 82	53	82	40	3.0±1.0	49	88	10	32	8000	1.88
CNM 97	69	97	50	3.0±1.0	103	186	10	42	7000	3.54
CNM 112	79	112	60	3.5±1.0	164	294	14	48	6000	5.40
CNM 128	90	128	70	3.5±1.0	262	471	18	55	5000	8.10
CNM 148	107	148	80	3.5±1.0	409	736	22	65	4500	13.50
CNM 168	124	168	88	3.5±1.5	682	1226	28	75	4000	19.30
CNM 194	140	198	100	3.5±1.5	1098	1961	32	85	3500	26.30
CNM 214	158	218	112	4.0±2.0	1638	2942	40	95	3000	35.70

\* Nor-Mex® is a registered trade mark of TSCHAN®

